

Cleanroom KL-R Amber Troffers-QS

2x2 and 2x4 Amber/White LED Recessed Luminaires



- **Rated IP66**
- **Suitable for ISO 3-9 Cleanspaces**
- **Suitable for 209E Class 1-100,000 Cleanspaces**
- **ETL listed for Wet Locations**
- **One piece overlapping doorframe**
- **Robotically seam welded housing**
- **0-10v 1% Dimming Standard for most configurations.**
- **Narrow Spectrum 590nm True Amber LEDs**
- **White / Amber separately controlled circuits**
- **Recessed Housing suitable for Tbar Grid AND Hardlid Installations**
- **BAA Compliant & Made in the USA by a Family Owned US Corporation**
- **5 Day Quick Ship For Orders Under 25 Fixtures**
- **3 Day Quick Ship For Orders Under 15 Fixtures**



DISCLAIMER: Although KURTZON has prepared the information contained in this document with all due care, KURTZON does not warrant or represent that the information is free from errors or omission. While the information is considered to be true and correct at the date of publication, changes in circumstances after the time of publication may impact on the accuracy of the information. The information may change without notice and KURTZON is not in any way liable for the accuracy of any information printed and stored or in any way interpreted or used.



ORDERING GUIDE

Series	Material	Size	Row Qty.	Amber LED	Row Qty.	White LED	CCT/CRI	Voltage	Options	Quick Ship
KL-R				YLED590		LEDR				
Series	Material	Size	Light Source				Voltage	Options	Quick Ship	
			Row Qty.	Amber LED	Row Qty.	White LED	CCT/CRI	Voltage		
KL-R	3 White 430 SS Hsg. & Polished 304 SS Door	2x2 2' x 2' Housing	1	YLED590	1	LEDR	83 CRI:	120V	EM10 10W Integral LED EM (Specify Input Voltage)	5DQS (5-Day Quick Ship)
	4 White AL Hsg. & Polished 304 SS Door	5 LED Rows Max	2		2		835 3500K	277V	EM20 20W Remote LED EM (Specify Input Voltage)	3DQS (3-Day Quick Ship)
	5 White AL Hsg. & White AL Door	OR	3		3		840 4000K	UNV	PxL Programmed to User Specified Lumen Value.	
	7 White AL Hsg. & White CRS Door	2x4 2' x 4' Housing	4						PxW Programmed to User Specified Wattage Value.	
		5 LED Rows Max							10KV 10KV Parallel Surge Protection (One Supplied Per Circuit)	
									GG 1/8" Thick Grid Gasket (Provided Loose)	

Ordering Notes, If Applicable

Cleanroom KL-R Amber Troffers-QS

2x2 and 2x4 Amber/White LED Recessed Luminaires

SPECIFICATIONS

HOUSING: One piece, hole free, robotically seam welded housing has flattened knockouts for a superior seal. Housings are available in .040" 3003 Aluminum or 20Ga 430 Stainless Steel.

DOOR FRAME: One piece door frame with welded corners overlaps the fixture allowing the NSF approved microcellular gasket to seal to the mounting surface. Door frame is hinged by aircraft cables and is supplied with captive stainless steel flush head screws to allow easy wiping of the surface. Available in .050" 3003 Powder coated Alum., 20Ga 304 Polished SS, or 18Ga Powder coated CRS.

GASKETS: NSF Listed closed cell microcellular extruded KleanLock SealPro gasket with vulcanized corners making a one-piece oil and solvent resistant gasket system. GG option provides a loose 1/8" thick adhesive backed gasket intended to adhere to the top face of a suspended grid ceiling for grid profiles that do not already have gasket on them.

OPTICS: Standard P12 prismatic acrylic lens is provided with an inverted lens so the smooth side faces the room for easy cleaning. Other optics may be available, consult factory for more information or options not listed.

LEDS: Fixture available with Amber only or Amber & White LED's, each color will be supplied with its own driver for dual switching. Amber LED's provide a narrow 590nm spectrum for wavelength sensitive applications. White high efficiency LEDs are commercially available & available in a wide variety of CRI and CCT. All boards have zhaga recognized hole patterns and come with a 5 year warranty.

DRIVERS: Standard Universal Voltage Class 2 drivers are 0-10v Dimmable to 1%, and rated -20C (-4F). They come with at least 2.5Kv surge protection, have less than 10% THD at max load, Ballast Factor Greater than .95 and are programmable to match specific lumen or wattage requirements. Drivers with higher input voltage ratings are available, consult factory for driver specifications. (each color LED comes standard with its own driver)

REFLECTOR: Die formed metal with high reflectance white polyester powder coat finish. Typical reflectivity 92%.

INSTALLATION RECESSED: Suitable for recessed Non-IC installation into covered ceilings. Fixtures are supplied with .875" flattened knockouts for supply entry. Recessed housings have (4) swing out toggle arms that are used to draw the fixture in to the ceiling for hard lid installation without the need for a yoke hanger. The toggle arm adjuster bolts are accessible from the room side of the luminaire and the actual toggles can be used as means of establishing a seismic support for lay in ceiling installations. Confirm ceiling compatibility with dimension drawings below.

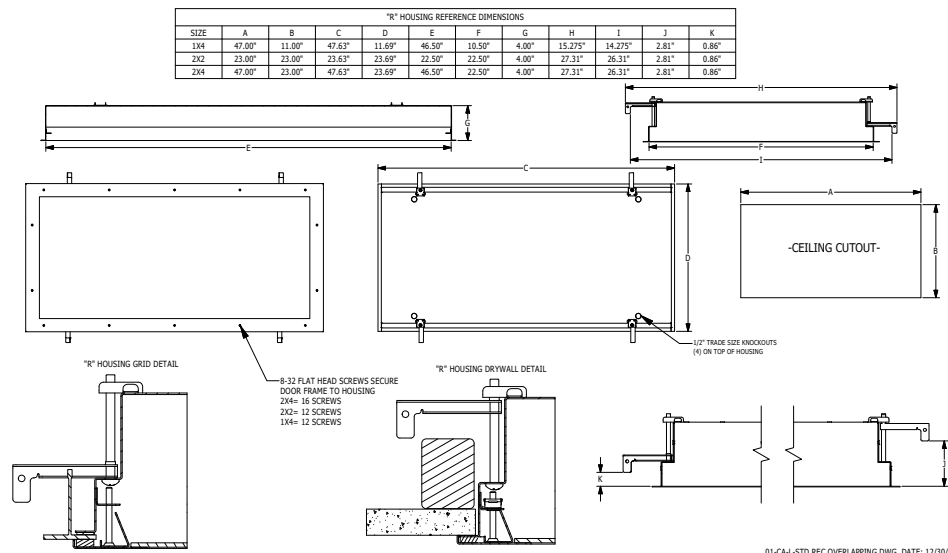
FINISH: Stainless steel door frames are satin polished. All other materials are provided with gloss high reflectance white polyester powdercoat with 1000hr salt spray test per ASTM B117.

LISTINGS: IP66 rated for dust and water ingress. Suitable for 1700 PSI high pressure hosedowns. ETL listed per UL_1598 for wet locations. Chicago Plenum Rated. Certified ISO-14644-1 for class 3 through class 9 cleanspaces. Certified Fed Std 209E for Class 1 through Class 100,000 cleanspaces. NSF2 Listed for non-food zones & Splash Zones. Drivers and LEDs are covered by a 5 year warranty, the remaining fixture is covered by a 10 year warranty. This product is Buy American Act (B.A.A.) compliant.

5-DAY QUICK SHIP POLICY: Quantity restriction of 25 fixtures. Once PO is received by 12:00 PM CST, shipping will occur within 5 business days. Standard freight applies. Expedited shipping to be paid by customer.

3-DAY QUICK SHIP POLICY: Quantity restriction of 15 fixtures. Once PO is received by 12:00 PM CST, shipping will occur within 3 business days. Standard freight applies. Expedited shipping to be paid by customer.

PRODUCT DRAWINGS



Cleanroom KL-R Amber Troffers-QS

2x2 and 2x4 Amber/White LED Recessed Luminaires

ENERGY DATA

OVERLAP-FGRS-AMBER LED TROFFER										
ENCLOSURE SIZE	LED SELECTION	DIMMING	83 CRI			590nm (Amber)			AMBIENT TEMP RATING	
			LUMENS	WATTS	EFFICACY	LUMENS	WATTS	EFFICACY	MINIMUM	MAXIMUM ³
2x2	1LEDR	0-10V 1%	1,808	15	121	NA			-20°C (-4°F)	40°C (104°F)
2x2	2LEDR	0-10V 1%	3,165	29	109				-20°C (-4°F)	40°C (104°F)
2x2	3LEDR	0-10V 1%	4,747	42	113				-20°C (-4°F)	40°C (104°F)
2X2	1YLED	0-10V 1%	NA			1,132	22	51	-20°C (-4°F)	40°C (104°F)
2X2	2YLED	0-10V 1%				2,264	43	53	-20°C (-4°F)	40°C (104°F)
2X2	3YLED	0-10V 1%				3,396	65	52	-20°C (-4°F)	40°C (104°F)
2X2	4YLED	0-10V 1%				4,528	86	53	-20°C (-4°F)	40°C (104°F)
2X4	1LEDR	0-10V 1%	3,431	29	118	NA			-20°C (-4°F)	40°C (104°F)
2X4	2LEDR	0-10V 1%	6,864	55	125				-20°C (-4°F)	40°C (104°F)
2X4	3LEDR	0-10V 1%	10,295	83	124				-20°C (-4°F)	40°C (104°F)
2X4	1YLED	0-10V 1%	NA			2,428	44	55	-20°C (-4°F)	40°C (104°F)
2X4	2YLED	0-10V 1%				4,856	87	56	-20°C (-4°F)	40°C (104°F)
2X4	3YLED	0-10V 1%				7,283	130	56	-20°C (-4°F)	40°C (104°F)
2X4	4YLED	0-10V 1%				9,711	173	56	-20°C (-4°F)	40°C (104°F)

¹ DELIVERED LUMEN DATA IS EXTRAPOLATED FROM MEASURED DATA @ 25C WITH NO EXTRA OPTIONS. VARIANCES WILL OCCUR WHEN OTHER SELECTIONS ARE MADE
² WATTAGE IS MEASURED WITH LED 840 SELECTION @ 120VAC AND Tambient = 25C. WATTAGES WILL VARY AND INCREASE WHEN ALTERNATE OPTAINS ARE SELECTED
³ MAX AMBIENT TEMP RATING, NON-IC INSTALLATON. TEMP RATING IS WITH NO OTHER OPTIONS SELECTED. WHITE LEDS ONLY SUITABLE FOR 40C AMBIENT

COLOR LED RELATIVE DISTRIBUTION

