

Cleanroom KL-SBD Series-QS

Sealed 6" Aperture Recessed LED Downlight for Cleanroom Installations.

- IP65 Rated
- Suitable for ISO 5-9 Cleanspaces
- Suitable for 209E Class 100-100,000 Cleanspaces
- ETL Listed for Wet Locations
- Built to NSF2 Standards
- Up to 4,250 Lumens Delivered
- Assembled in USA and Optionally BAA compliant
- 5 Day Quick Ship For Orders Under 25 Fixtures
- 3 Day Quick Ship For Orders Under 15 Fixtures





OPTIONAL

DISCLAIMER: Although KURTZON has prepared the information contained in this document with all due care, KURTZON does not warrant or represent that the information is free from errors or omission. Whilst the information is considered to be true and correct at the date of publication, changes in circumstances after the time of publication may impact on the accuracy of the information. The information may change without notice and KURTZON is not in any way liable for the accuracy of any information printed and stored or in any way interpreted or used.

ORDERING GUIDE

Series	Material	Size	LED Type	CCT/CRI	Voltage	Baffle	Door (Trim)	Options	Quick Ship
KL-SBD	4	8		840	UNV				

Series	Material	Size	LED Type	CCT/CRI	Voltage	Baffle	Door (Trim) Finish	Options	Quick Ship
KL-SBD	4 Non-Magnetic	8 8" Housing	DLM15 1500Lm Package	83 CRI:	UNV 120V-277V	WB White Grooved Baffle	WT White Painted Trim	10KV 10KV Parallel Surge Protection	5DQS (5-Day Quick Ship)
			DLM20 2000Lm Package	840 4000K		SR Specular Reflector	ST Polished Stainless Trim	EM7 Remote Mount 7W Battery Pack (Specify Input Voltage)	3DQS (3-Day Quick Ship)
			DLM30 3000Lm Package					BAA Buy American Act Compliant	
			DLM40 4000Lm Package						

Ordering Notes, If Applicable

Cleanroom KL-SBD Series-QS

Sealed 6" Aperture Recessed LED Downlight for Cleanroom Installations.

SPECIFICATIONS

HOUSING: Stainless steel body and spun aluminum housing and plaster frame.

DOOR FRAME: Aluminum or stainless steel formed with continuous lens hold-down system and screwless entry. Cleanroom style construction with a smooth cleanable surface with no crevices.

GASKETS: One piece gasket located at interface of door to housing silicone seals the door to the lens. GG option provides a loose 1/8" thick adhesive backed gasket intended to adhere to the top face of a suspended grid ceiling for grid profiles that do not already have gasket on them.

REFLECTOR: Supplied with a wide variety of baffles and reflectors. See options for availability.

OPTICS: Clear non-prismatic nominal 1/8" thick polycarbonate lens is standard and will be mechanically secured and silicone sealed to door frame. DLM40 light source selection is provided without integral diffusing optic.

LED: LEDs are 80 CRI, 4000K CCT and are Available in different lumen outputs up to 4,250 Lm delivered. Integrated heatsink maintains thermal efficiency and prolong the life of the light engine.

ELECTRICAL: Integrated constant current static low voltage DC commercially available driver designed specifically for LED array. Driver has 0-10V dimming control to 1%.

INSTALLATION: Four adjustable L-brackets allow for seismic support and secure attachment to metal T-Bars, joists or structural metal framing. Sealed 1/2 inch trade size knockouts for wiring. Suitable for 1, 1.5 and 2 inch T-bar widths as well as drywall or plaster ceilings. Suitable for NON-IC installation.

FINISH: Antimicrobial white polyester powder coat on doorframe surface. Stainless steel trims are satin polished.

LISTINGS: ETL Listed for Wet Locations. Suitable for non-IC installation. IP-65 dust and water jet resistance. IBEW Union Label. Certified ISO-14644-1 classes 5 to 9 Fed. Std. 209E Class 100.

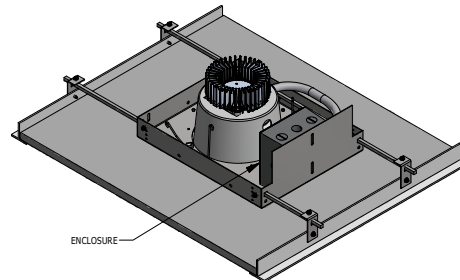
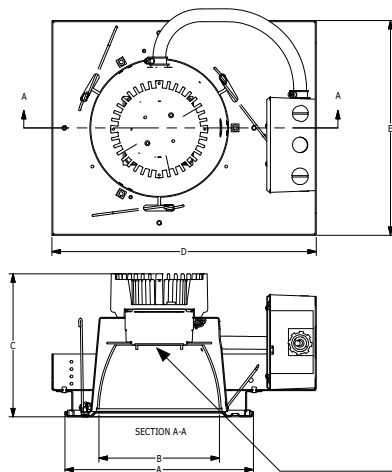
5/10 YEAR WARRANTY: The driver(s), LED's and EM packs are covered by a five (5) year warranty. The remaining fixture is covered by a ten (10) year warranty. See warranty statement at kurtzon.com for complete details.

5-DAY QUICK SHIP POLICY: Quantity restriction of 25 fixtures. Once PO is received by 12:00 PM CST, shipping will occur within 5 business days. Standard freight applies. Expedited shipping to be paid by customer.

3-DAY QUICK SHIP POLICY: Quantity restriction of 15 fixtures. Once PO is received by 12:00 PM CST, shipping will occur within 3 business days. Standard freight applies. Expedited shipping to be paid by customer.

PRODUCT DRAWINGS

DOWNLIGHT REFERENCE DIMENSIONS					
MODEL	DIM A	DIM B	DIM C	DIM D	DIM E
SBD/180	9.00"	5.75"	6.85"	12.65"	10.25"
					26.00"



INTEGRAL DIFFUSING OPTIC
(NOT INCLUDED FOR DLM40)

12-AA-L-DOWNLIGHT DWG DATE: 4/11/2107

Cleanroom **KL-SBD Series-QS**

Sealed 6" Aperture Recessed LED Downlight for Cleanroom Installations.

ENERGY DATA

SEALED LED DOWNLIGHT						
LIGHT PACKAGE	CRI	DELIVERED LUMENS (Lm) ¹	WATTAGE (W) ²	EFFICACY (LM/W)	DIMMING AVAILABILITY	MAX AMBIENT TEMP (°C) ³
DLM15	80+	1,536	15	102.4	0-10V 1%	40°C (104°F)
DLM20	80+	2,049	20	102.4	0-10V 1%	40°C (104°F)
DLM30	80+	3,353	35	97.3	0-10V 1%	40°C (104°F)
DLM40	80+	4,247	35	121.2	0-10V 1%	40°C (104°F)
EM7	NA	528-848Lm	4	NA	0-10V 1%	35°C (95°F)

- 1: DELIVERED LUMEN DATA IS EXTRAPOLATED FROM MEASURED DATA @25C WITH NO EXTRA OPTIONS.
- 2: WATTAGE IS MEASURED @ 120vAC AND Tambient = 25C. WATTAGES MAY VARY AND WHEN OPTIONS ARE SELECTED
- 3: MAX TEMP RATING IS WITH NO OTHER OPTIONS SELECTED,(NON-IC)

PHOTOMETRICS

CLEAR FLAT LENS

